



County Supervisors
A S S O C I A T I O N
o f a r i z o n a



State County Partnership ***Arizona Legislative Academy***

Brad Carlyon, County Attorney, Navajo County

James Jayne, Manager, Navajo County

January 5, 2017

Arizona's Territorial Days



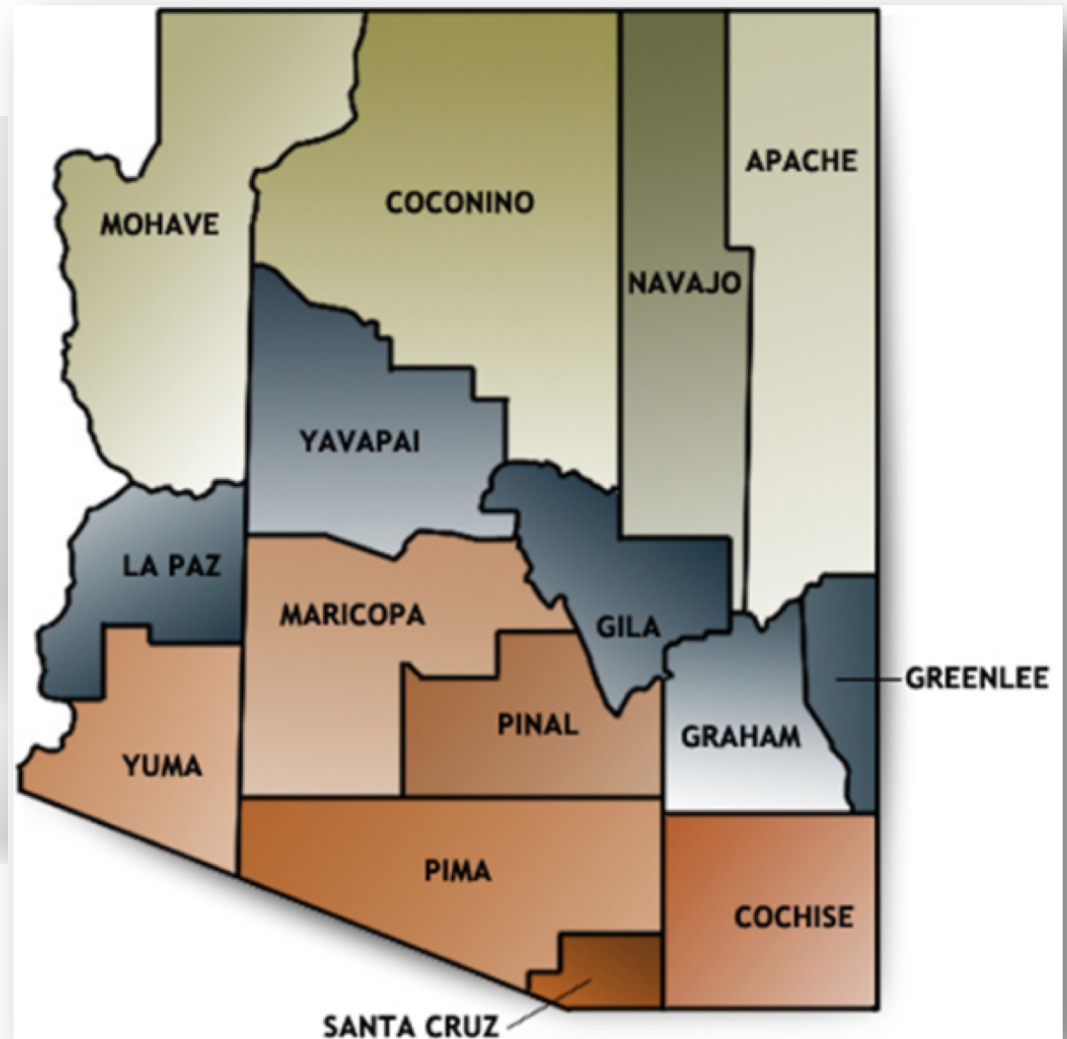
- 4 Territorial era counties in 1864
 - *Mohave*
 - *Pima*
 - *Yavapai*
 - *Yuma*
- The now defunct Pah-Ute County split from Mohave County in 1865, but merged back in 1871.
- 14 Counties at Statehood in 1912



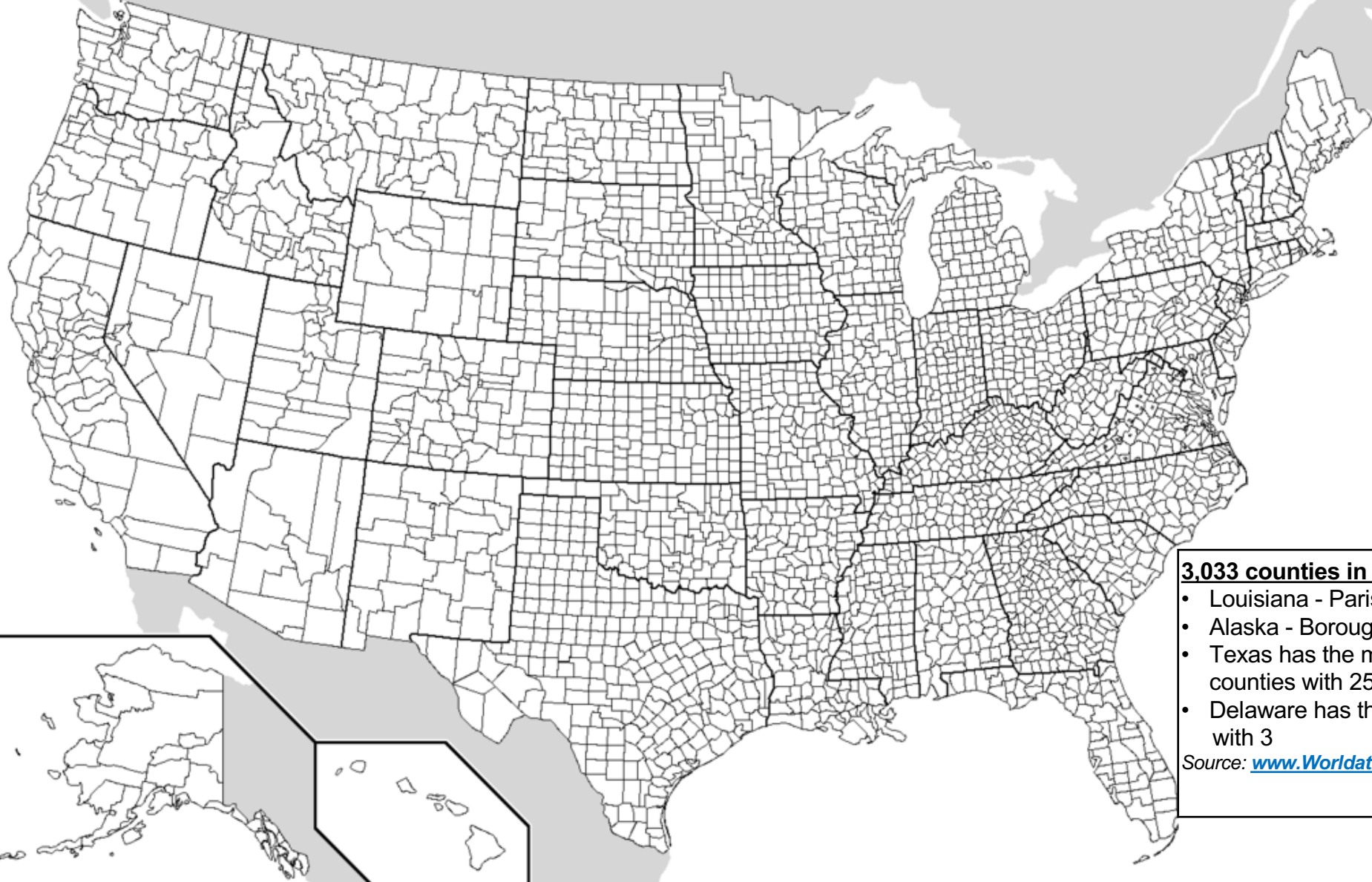
Arizona Counties



- 15 counties in Arizona
- All counties have a 3 or 5 member board
- There are more than 300 County Elected Officials in Arizona, including 61 County Supervisors



U.S. County Map



3,033 counties in the U.S.

- Louisiana - Parishes
- Alaska - Boroughs
- Texas has the most counties with 254
- Delaware has the fewest with 3

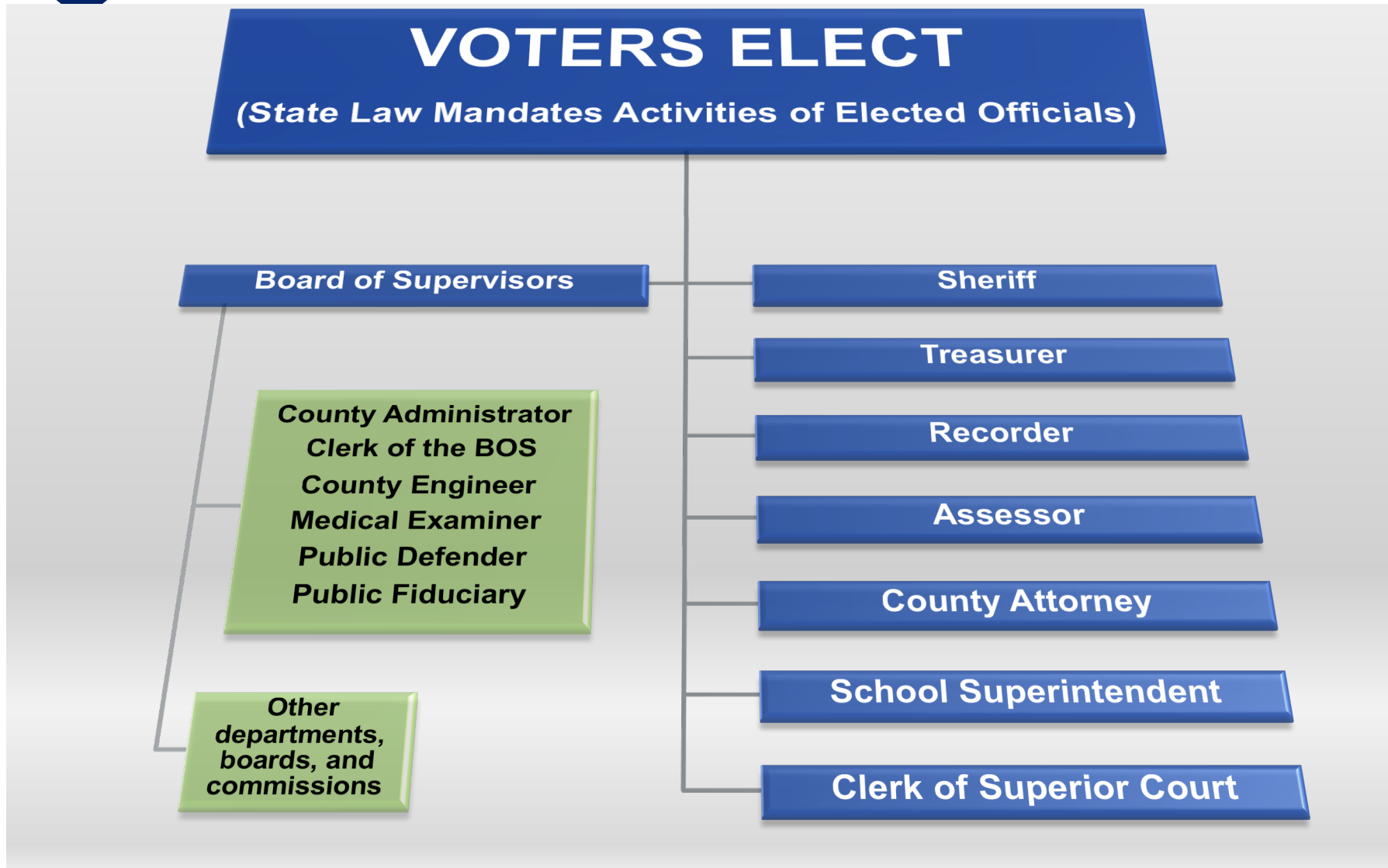
Source: www.Worldatlas.com

What is the role of counties?



- Counties are *political subdivisions* of the state, charged with implementing state law and policy on a *regional level* - overseen by locally elected officials
- Unlike cities, counties do not have “home rule” (*authority to act independently of the state*), therefore, ***counties only have powers and authorities delegated to them by the Arizona Legislature and State Constitution***

How is a county organized?



How are Counties Governed?



- Power is derived by Arizona Constitution and state law and is divided between elected governing body (board of supervisors) and separately elected officials
 - Constitutional Offices
 - Statutory Duties
- State law endows county supervisors with budgetary authority over the county
- The structure of county government requires close collaboration among the elected officials to promote an efficient, effective organization.

Regionally Efficient Services



Providing public safety and jail operations through the Sheriff's Office



Prosecuting state crimes through the County Attorney



Providing for indigent defense through the Public Defender



Coordinating emergency management and response



Conducting elections and maintaining voter records



Record and store legal documents, including deeds, mortgages, etc.



Operation and maintenance of county fair and parks



Operation of Superior courts and Justice of the Peace courts



Probation operations (in conjunction with the state)



Building and maintenance of roadways and bridges



Assess and collect property taxes on behalf of schools and other districts



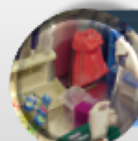
Set and implement zoning, subdivisions, and other land-use regulations



Administer environmental and public health programs & inspections



Provide medical examiner and indigent burial services



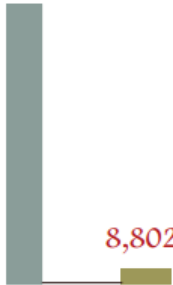
Counties by the Numbers



Arizona has **15** diverse counties

Public Finances

3,942,169



Maricopa County
Greenlee County



Counties manage the collection

Arizona Counties Matter

Arizona's County Governments provide essential services that millions count on every day. From public safety and courts to elections and public health, and from educational services to public finance, property record management and transportation — your county does so much!

With America's system of **FEDERALISM**, counties are a **KEY LEVEL** of government, **DIRECTLY** serving the people.



As governments created by states, counties provide **ESSENTIAL PUBLIC SERVICES** including many mandated by **FEDERAL** and **STATE** laws and regulations.

Services

Counties employ more than **37,000**

Arizonans delivering a variety of services

- Health care
- Public Safety & Jails
- Courts
- Elections
- Record-keeping
- Transportation
- Mental Health Services
- Community Colleges
- Parks & Recreation
- Animal Care & Control
- Flood Control
- ...and so much more



Courts



Arizona's county courts processed more than **211,000** cases through Superior Court in 2012.

Transportation

Counties are responsible for more than **20,000** miles of roads in Arizona and for the maintenance of **1,035** bridges



Law Enforcement

Arizona's counties operate **31** jails across the state



Housing more than **18,000** inmates on any given day

Elections



Counties fund and oversee more than **1,830** polling places

and coordinate **15,076** poll workers **EVERY TWO YEARS**

Arizona's County Governments provide essential services that millions of your constituents count on every day.

Data compiled from the Arizona Association of Counties Summer/Fall of Counties 2012. Population estimates are from the U.S. Census Bureau.

Data compiled from the Arizona Association of Counties Summer/Fall 2013 and from the National Association of Counties 2012. Population estimates are from the U.S. Census Bureau.



What else do counties do?



Perform city-type functions in unincorporated areas

- Local law enforcement (sheriff) and justice courts (misdemeanors)
- Build and maintain roads, manage transportation system, enforce building safety codes
- Set and implement zoning, subdivision and other land use regulations

County Population Distribution



County	2015 Population Estimate	2015 Incorporated Population	2015 Unincorporated Population	% of Unincorporated Population 2015
Apache	72,215	10,404	61,811	85.60%
Cochise	129,112	78,198	50,914	39.40%
Coconino	141,602	86,366	55,236	39.00%
Gila	54,406	28,363	26,043	47.90%
Graham	38,475	17,337	21,138	54.90%
Greenlee	10,555	5,312	5,243	49.70%
La Paz	21,183	6,985	14,198	67.00%
Maricopa	4,076,438	3,782,560	293,878	7.20%
Mohave	205,716	127,447	78,269	38.00%
Navajo	109,671	40,176	69,495	63.40%
Pima	1,009,371	648,348	361,023	35.80%
Pinal	406,468	201,543	204,925	50.40%
Santa Cruz	50,270	22,873	27,397	54.50%
Yavapai	217,778	131,637	86,141	39.60%
Yuma	214,991	150,811	64,180	29.90%
Arizona	6,758,251	5,338,360	1,419,891	21.00%

**All data obtained via July 1, 2015 population estimates for Arizona's Counties via Arizona's Office of Employment and Population Statistics.*

How are counties funded?



Counties are funded through a combination of local and state-shared revenue (sources in **blue** are statutorily capped):

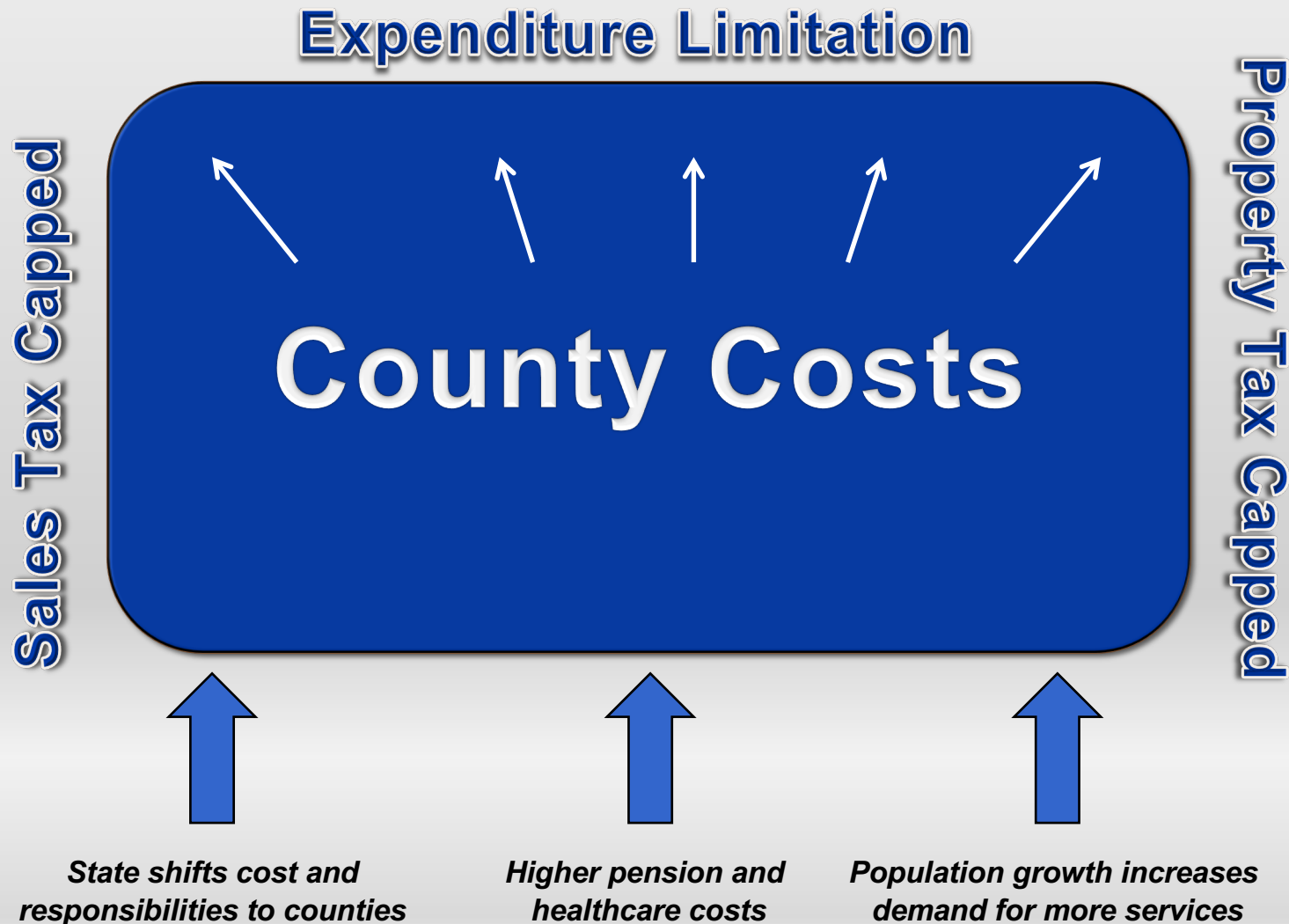
- Local tax revenue

- **Half-cent sales tax**
- **Primary property tax**
- **Secondary property tax** (for dedicated purposes)

- State-shared revenue

- Sales tax (cities receive a portion of state income tax)
- Vehicle license tax
- Highway User Revenue Fund (HURF)
 - Over **\$140.6 Million** diverted from counties since 2009

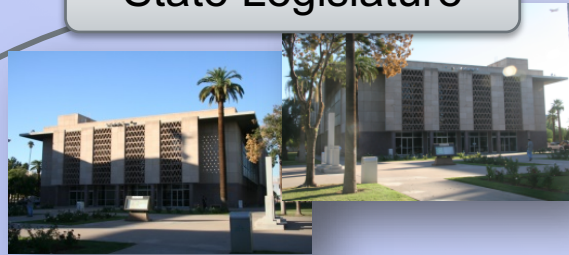
Do counties have financial flexibility?



5 Forces Impacting County Operations



State Legislature



The Executive & State Agencies



Arizona's 15
County
Governments

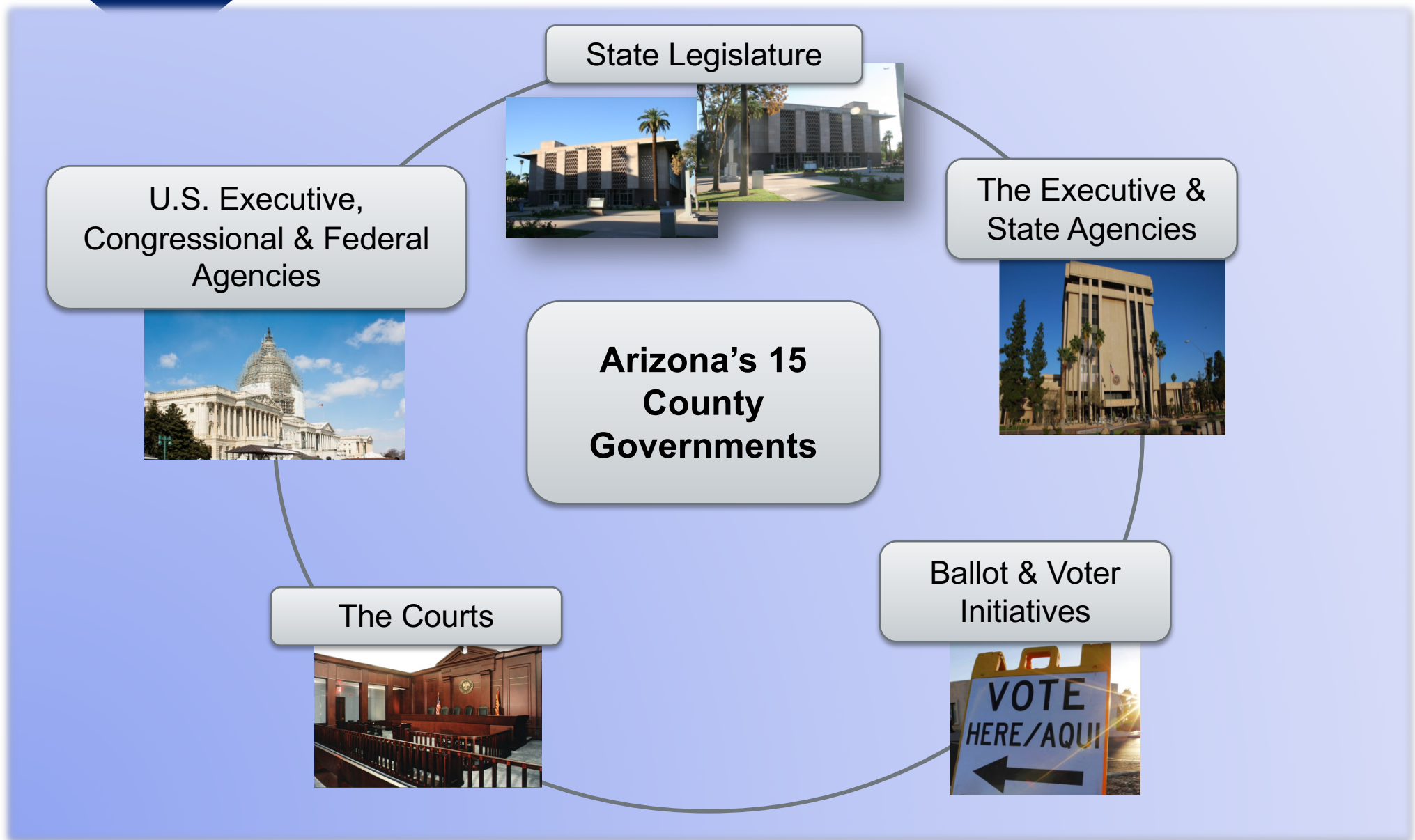
Ballot & Voter
Initiatives



The Courts



U.S. Executive,
Congressional & Federal
Agencies



Takeaways



- Since counties provide constitutional and state mandated services (*public safety, transportation and criminal justice*), your policy choices affect local costs and county responsiveness to constituents.
 - *Federal, state and judicial action drive costs in county operations.*
- Unlike cities, counties have limited financial flexibility and fixed, limited revenue streams.
- Counties need relief; state action diverting local resources for state obligations is bad public policy and damaging local services.
 - *County impacts since 2009: **\$504.4 million***
 - *Counties currently pay a portion of 4 state agencies, historically funded by the state GF*
 - *Absent relief counties will lose **\$52.42 million** in this year's budget*
- County officials are your partners in serving your constituents.

CSA-AACo Partners in County Advocacy



Jennifer Marson, Executive Director - AACo

jmarson@azcounties.org

602-252-6563

www.azcounties.org

Craig Sullivan, Executive Director - CSA

craigs@countysupervisors.org

602-452-4500

www.countysupervisors.org

Our Address

**1905-1910 West
Washington St.
Phoenix, AZ 85009**

