



# Arizona Department of Economic Security Overview

Leslie Cohen, JD, Director Sonoran University Center on Disabilities, Vice Chair Community Outreach and Engagement



COLLEGE OF MEDICINE TUCSON

Family & Community  
Medicine



COLLEGE OF MEDICINE TUCSON

Family & Community  
Medicine

# Sonoran UCEDD

- Bridge between university and community
- Engaged in disability related research, education, policy development, model programs, and information dissemination





COLLEGE OF MEDICINE TUCSON

Family & Community  
Medicine

# AZ DES Purpose

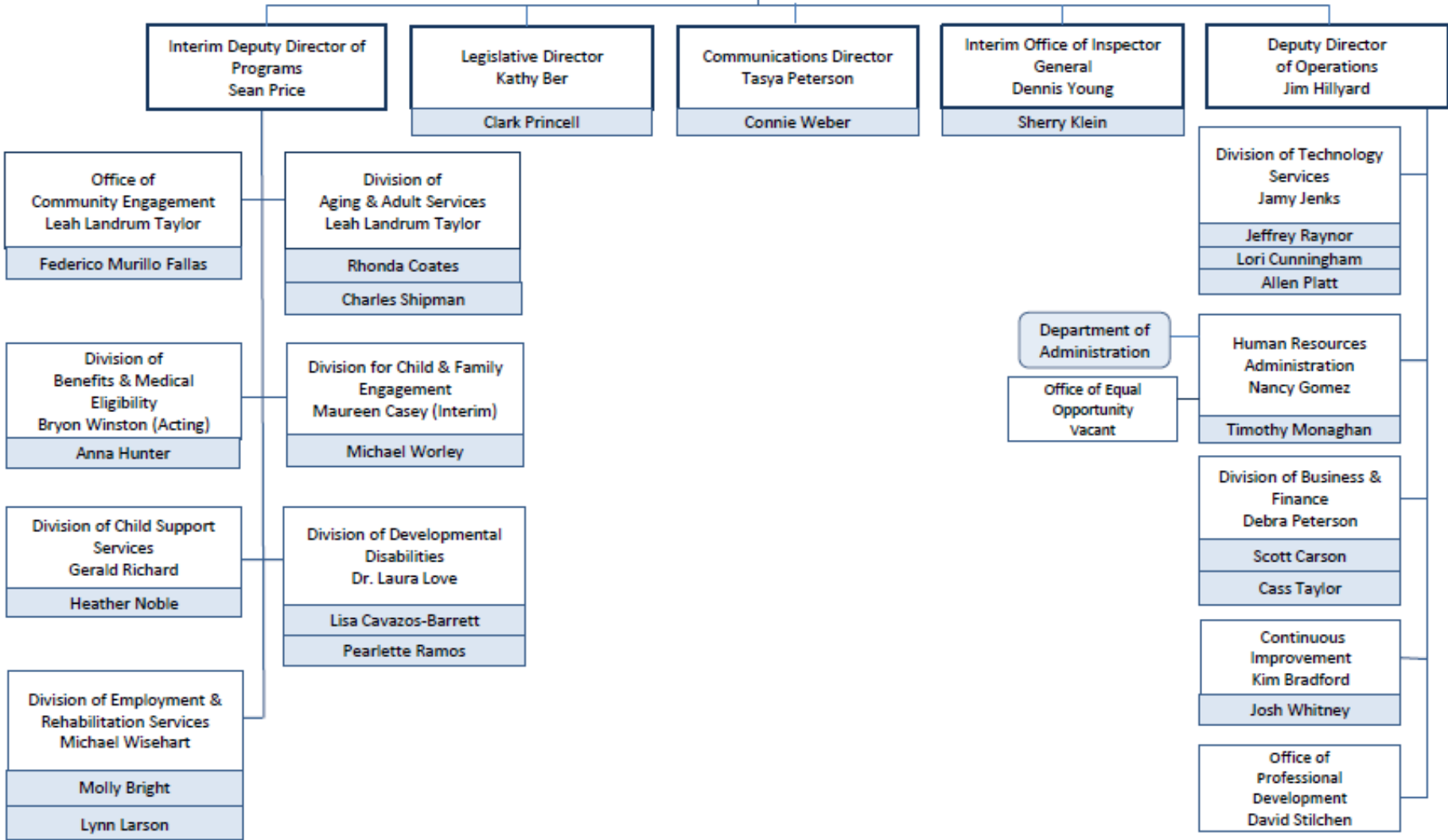
- Temporary assistance for those in need
- Care for the vulnerable



# Arizona Department of Economic Security

**Governor  
Doug Ducey**

**Interim Director  
Henry Darwin**





COLLEGE OF MEDICINE TUCSON

Family & Community  
Medicine

# DES PROGRAM AREAS

## **Caring for the Vulnerable**

- Developmental Disabilities
- Aging and Adult Services

## **Temporary Assistance for those in Need**

- Basic Needs Benefits and Assistance
- Employment & Rehabilitation Services
- Community Services
- Child Support Services

*Note data contained in PowerPoint from AZ Des Overview PPT(2016)*



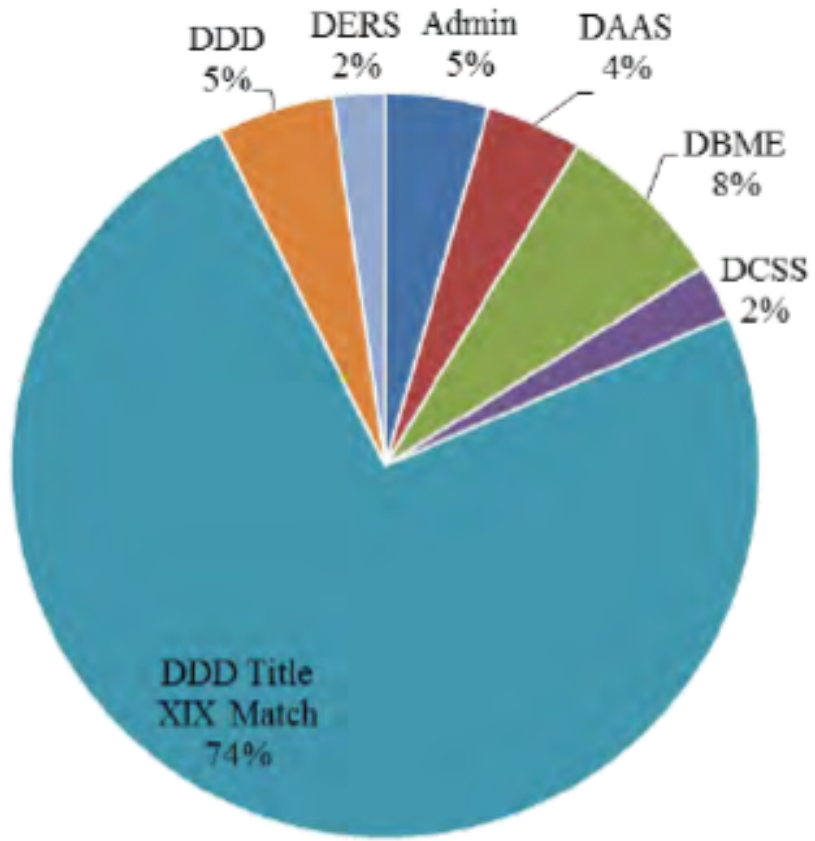
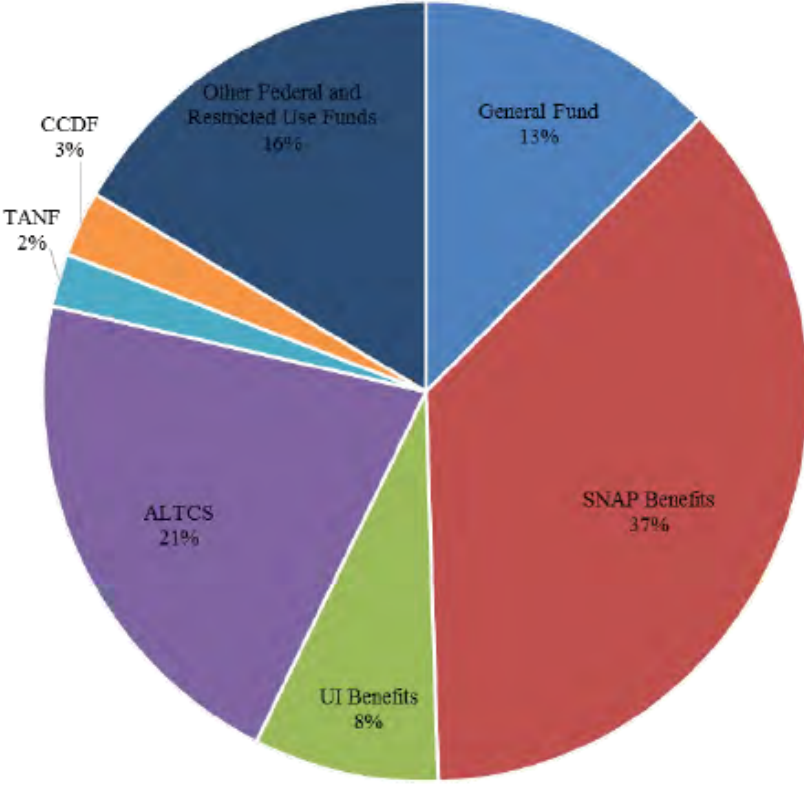
COLLEGE OF MEDICINE TUCSON

Family & Community  
Medicine

# DES does not cover:

- Department of Child Safety (Child Protective Services) stand alone agency since 2014.
- Behavioral health services are part of AHCCCS (administered by RBHA)
- Health Care Services Medicaid (AHCCCS) – DES only handles eligibility

# FY 16 Total Funds by Source & By General Fund Amounts





# Division of Developmental Disabilities (Eligibility)

- **Arizona Early Intervention Program (AzEIP)** – birth to 3 yrs who exhibit developmental delays
- **ALTCS DD** – one of four conditions (epilepsy, cognitive disability, autism or cerebral palsy) impacts 3 major live activities and financial requirements.
- **State Only DD** – not meeting ALTCS eligibility.
- ***Serves: over 30,000 Arizonans Statewide***





# Division of Developmental Disabilities (Services)

- AzEIP – research demonstrates that the earlier therapies and interventions are implemented for a child with developmental delays the more likely to achieve positive long term outcomes.
- In 2015, almost 6000 children in AZ received team based intervention in the community.





COLLEGE OF MEDICINE TUCSON

Family & Community  
Medicine

# Division of Developmental Disabilities (Services)

- ALTCS DD: majority of individuals on DDD are ALTCS eligible and receive services based on individual needs including habilitation, therapies, day programming, in home services, and employment supports.
- ALTCS State Only: limited funding since 2009. Approx. 2500 individuals receive more limited services.

*Arizona a leader in community living: 87% live in own home (instead of institution)*



COLLEGE OF MEDICINE TUCSON

Family & Community  
Medicine

# Division of Developmental Disabilities (Possible Issues)

- Rate hike requests for service providers due to increase in State minimum wage.
- Looking at Arizona State Training Program at Coolidge long-term closure.





COLLEGE OF MEDICINE TUCSON

Family & Community  
Medicine

# Aging and Adult

## Adult Protective Services

- Vulnerable adult (people 18 years of age and older) who are the victims of neglect, abuse or exploitation.
- Hotline and investigations

*FY 2015, 13,793 reports resulted in investigations*



COLLEGE OF MEDICINE TUCSON

Family & Community  
Medicine

# Aging and Adult

- Independent Living Support Services
- Senior Community Services
- Employment





# Basic Needs and Benefits Assistance

- **Eligibility Determinations** (areas where DES determines client eligibility but does not provide the actual services, supports, or benefits)
  - Medicaid/AHCCCS – 1.5 million on program
  - Social Security Disability—88,000 applications processed